



***Presentation
to the
GNO Hotel
Lodging
Association***

Nov. 11, 2009



Presentation Summary

- A national search is underway for a new Director of Aviation at MSY.
- Non-stop international air service now available at Louis Armstrong New Orleans International Airport.
- Armstrong International Airport's modernization plan continues to better serve passengers and the airlines.
- A commitment of more than \$357 million to capital improvement, creating more than 6,300 jobs.
- Funded mostly from user fees (*passenger facility charges – PFCs*), grants and third-party developers.
- Project implementation is scheduled over the next three to five years.
- Privatization is being explored.





National Search for Director of Aviation Underway

Sean Hunter's resignation as Director of Aviation was effective in October 2009.

Patricia Malone, Deputy Director of Finance & Administration is serving as the Interim Director of Aviation.

A national search for a new Director of Aviation is underway with a target announcement of a new Director by mid 2010.



Armstrong International Airport Kenner Site



North

Two Runways:

North-South

1/19: 7,001 Ft.

East-West

10/28: 10,104 Ft.

1360 Acres

Owned by the
City of New
Orleans

Resides in
Jefferson
Parish, Kenner
LA

East – West
Runway
projects into
St. Charles
Parish

Oversight
by 9 member
Aviation
Board

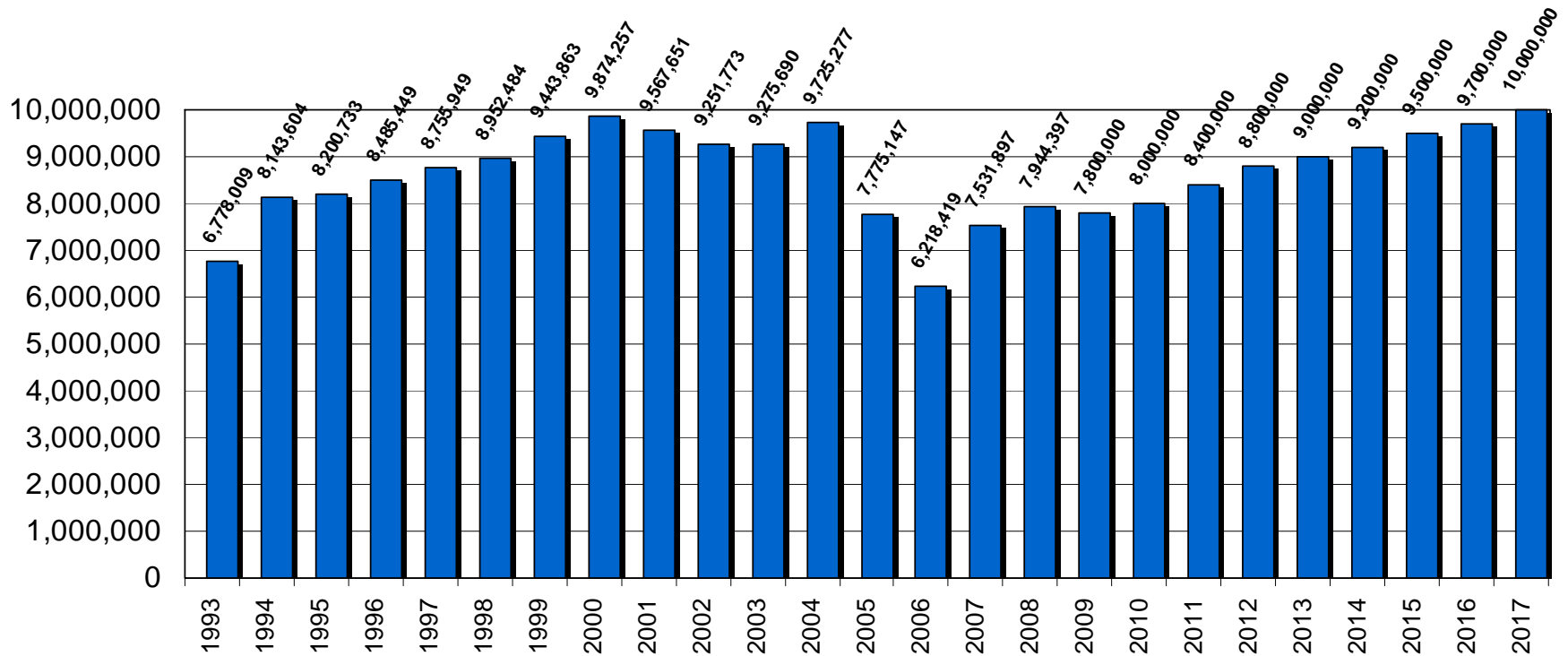
10 Airlines serve Armstrong International Airport

As of November 2009:

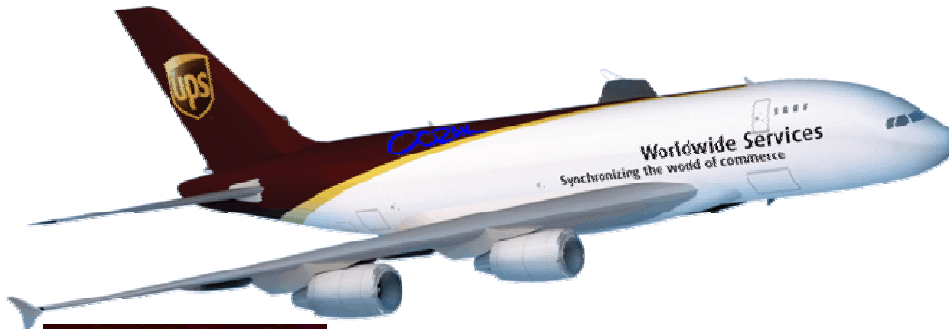
123 daily departures – 75% of Pre-K (162)
34 destinations – 78% of Pre-K (42)
15,163 seats – 73% of Pre-K (20,656)



ARMSTRONG INTERNATIONAL AIRPORT TOTAL YEARLY PASSENGERS & PROJECTIONS



Daily Scheduled Cargo Carriers



> These two cargo carriers presently serve the Greater New Orleans Metro area on a daily basis. FEDEX has a contract with the U.S. Postal Service.



FedEx®
Corporation

Modernizing Armstrong International Airport with Capital Improvements



Capital Improvements at Armstrong International Airport began in 2003 and 2005 with \$100 million for rehabilitation of both runways.

A \$357 million Capital Improvement Program is presently underway.

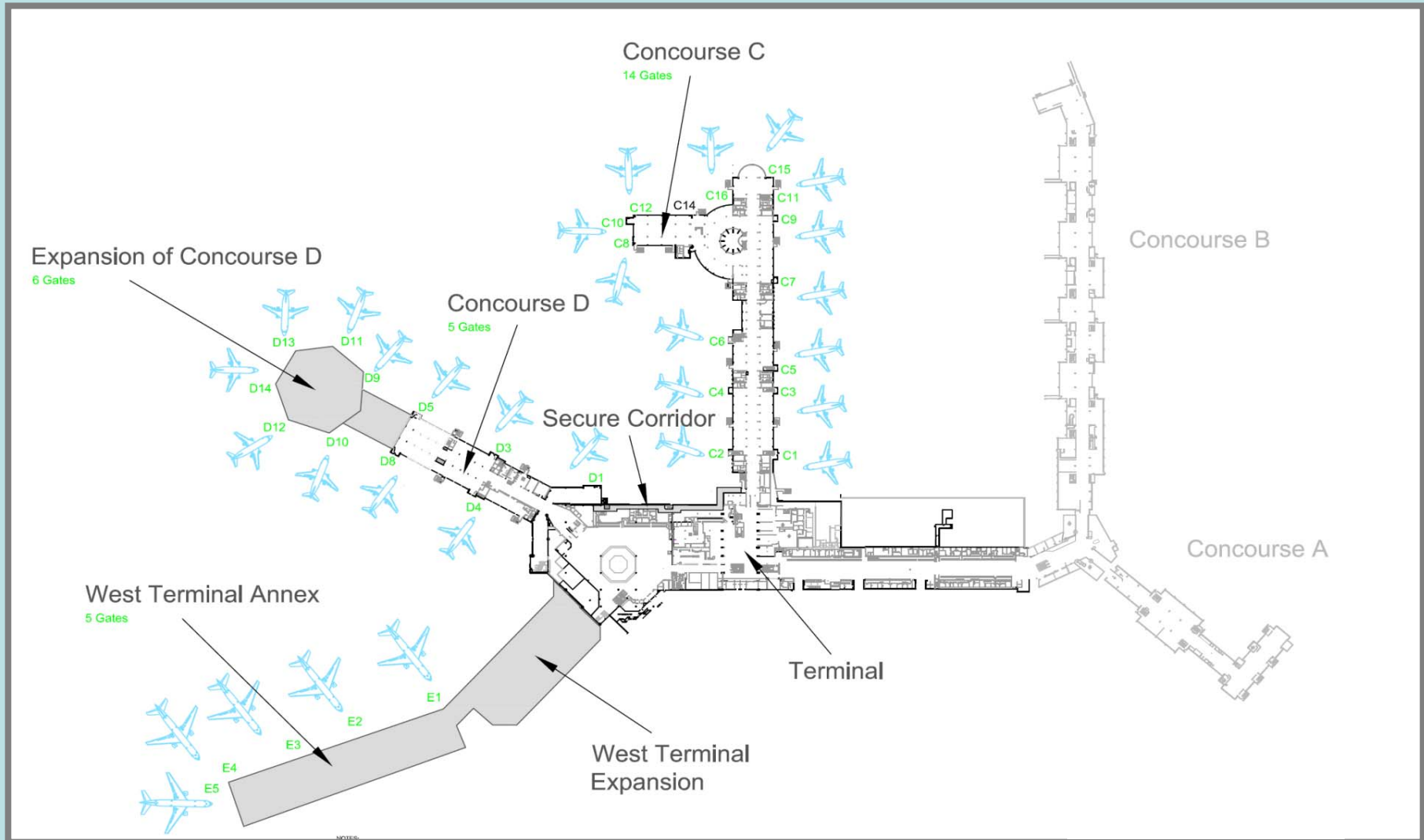
Armstrong Land Side Improvements

Today Armstrong Capital Improvements are modernizing the Airport by upgrading existing facilities and creating new ones.

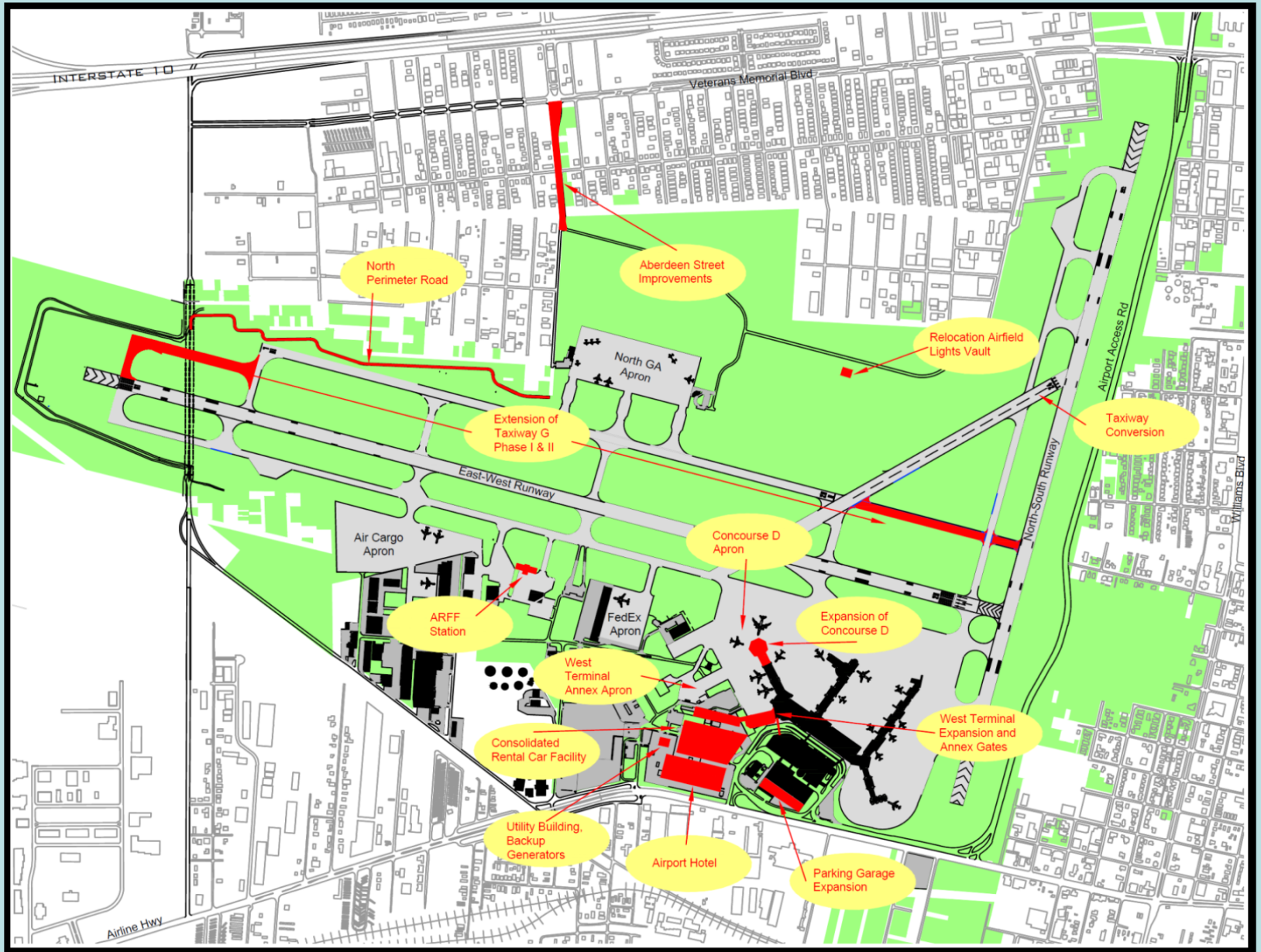
- New concourses
- Enhanced and rehabilitated restrooms
- Enhanced and rehabilitated Airport interiors, exteriors and directional signage

- New ground transportation facilities: road and transit access
- Improved concessions: news, gifts, food and beverage
- 1,000 space parking garage expansion
- New terminal areas
- 1,800 new rental car spaces in nearby Consolidated Rental Car Facility
- On-airport hotel

Terminal Modernization



PROJECT LAYOUT



Terminal Exterior Improvements

Budget

\$9 Million
100% PFC Funding

Current Status

Phase I: (Access Road) substantially complete.

Phase II: (Upper & Lower Roadway) Construction to begin in late 2009/early 2010.

Construction related jobs:
210

Phase I of the project involves upgrading signage and lighting on the Airport Access Road.

Phase II involves improvements to the 1st and 2nd level façades along the curbside.

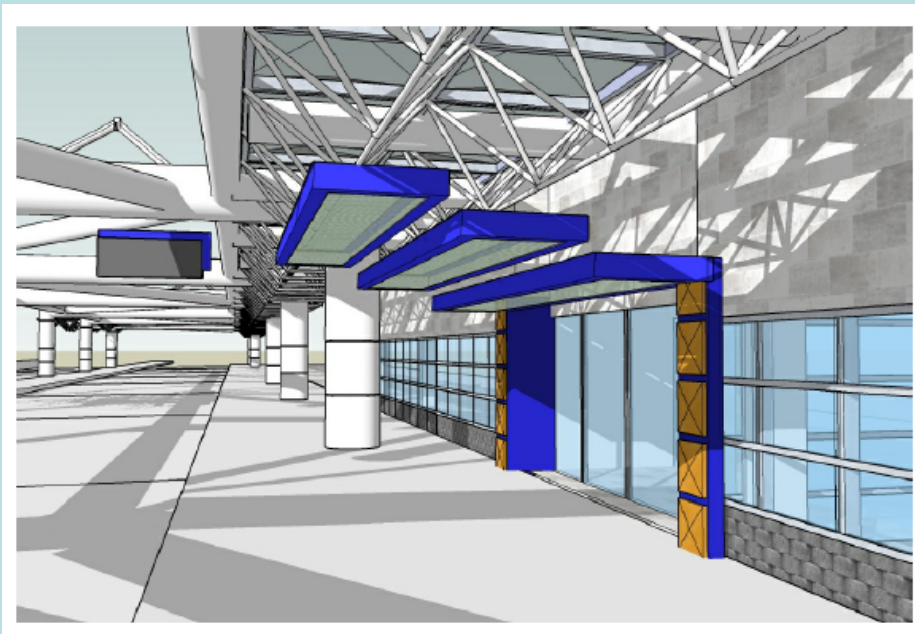


- **Project Construction Start**



Exterior Improvements: Phase II

The Upper Roadway



Artist illustration

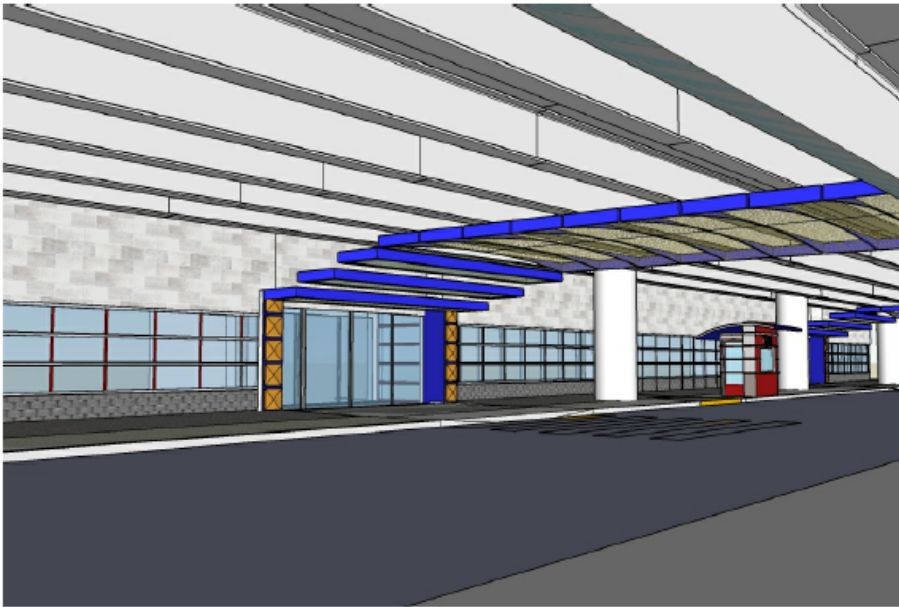
AFTER



BEFORE

Exterior Improvements: Phase II

The Lower Roadway



Artist illustration

AFTER



BEFORE

Terminal Interior Improvements

Budget

\$21 Million
100% PFC Funding

Current Status

Phase I: (Restrooms) Construction to begin early 2010.

Phase II: (FIDS) Construction to begin late 2009.

Phase III: (Terminal/Concourse Upgrades) Construction to begin in early 2010.

Construction related jobs: 489

Phase I involves restroom renovations.

Phase II of the project involves upgrades to the Flight Information Display System (FIDS).

Phase III involves renovations to the terminal area.



Artist illustration



- **Project
Construction Start**



Airfield Rescue & Fire Fighting Station (ARFF)

A new, upgraded and expanded ARFF Station will accommodate the new ARFF vehicles, improve passenger safety and meet FAA requirements, along with current and future safety needs.

Budget

\$10 Million
PFC funding

Current Status

Construction underway.

Construction related jobs:
240



Artist illustration

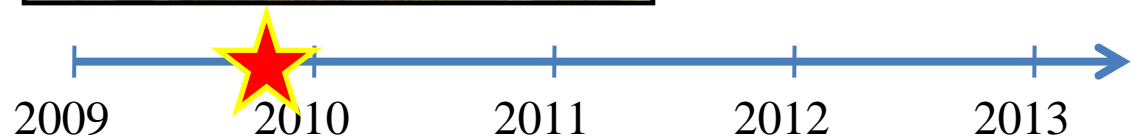


Groundbreaking Ceremony

State-of-the-art \$1 million ARFF vehicle



- Project
Construction Start



Terminal Apron Rehabilitation Phases I - IV

Budget

\$36+ Million
75% AIP, 25% PFC

Current Status

Phased construction
underway.

Rehabilitate the air carrier apron that surrounds the terminal and concourses.



Project location



- Project
Construction Start



Consolidated Rental Car Facility (CONRAC)



Artist
illustration

Consolidated Rental Car Facility (CONRAC)

Budget

\$114 Million

100% rental car user fees
No airport funds will be used
for this project.

Current Status

Design complete.

Construction to expected to begin in
2010. Scheduled opening
is 2012.

Construction related jobs:
2600

1,800 ready return rental car parking spaces.

Three level garage.

Five rental car centers for fueling, cleaning
and maintenance.

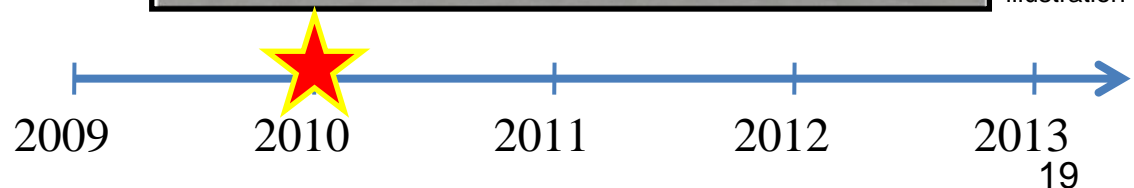
Eliminates busing from terminal to rental car
spaces, reducing air pollution and traffic
congestion.



Artist
illustration



- Project
Construction Start



Utility Building

This project will create a storm-proof power and water facility for the Airport allowing the Airport to be even better prepared to play a role in future emergency events, if necessary.

Budget

\$17 Million
100% PFC Funding

Current Status

The project is in the planning phase to be implemented in 2010 and coordinated with the Consolidated Rental Car Facility project.

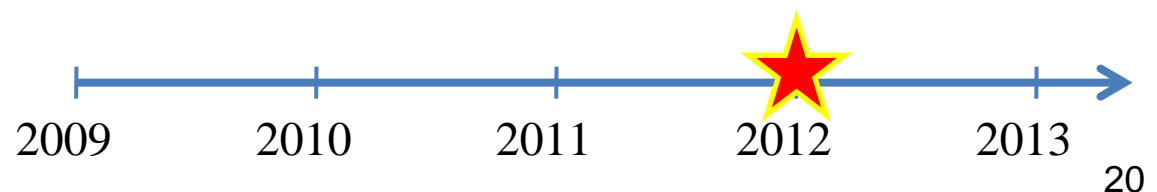
To be completed by 2012.



Project simulation



- Project Completion



Extension of Concourse D

The addition of 6 air carrier gates to Concourse D, including new food and beverage outlets, retail, restrooms, and the ability to accommodate new, larger aircraft.

Budget

\$40 Million

PFC collections with all ineligible costs funded from the Airport's local funds.

Current Status

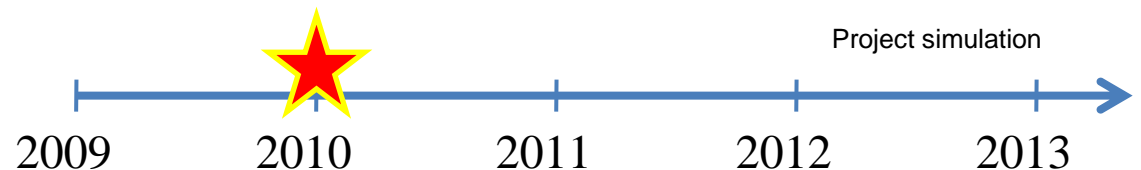
Design complete.

Construction to begin in 2010

Construction related jobs:
946



- Project
Construction Start



Parking Garage Expansion

Budget

\$26 Million

Third-party
developer/operator. No
Airport funds will be used
for this project.

Current Status

Construction to begin in
2010 and be completed
in 2012.

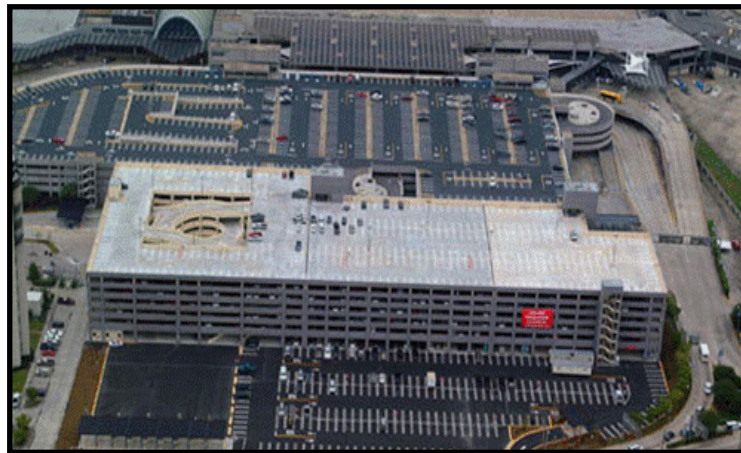
Construction related jobs:
608

An addition of 1,000 new parking spaces to the
existing parking garage.

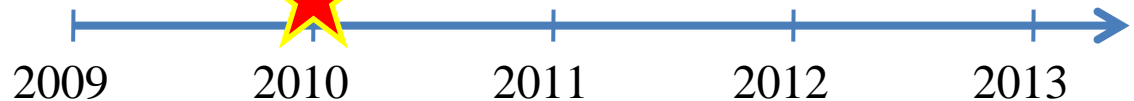
Spaces will allow more passengers to park closer to
the terminals.

Equipped with state-of-the-art features for efficient
service.

Expanding capacity will generate additional revenue.



- Project
Construction Start



West Terminal Expansion & Annex Gates Building

240,000 square feet expansion including five gates, ticket counters, security screening, and baggage facilities required to support new and upgraded concourses.

Budget

\$34 Million

\$30 million of PFC funding,
remaining funding to be
made up of Airport
local funds.

Current Status

Construction is scheduled for
2011/2012.

Construction related jobs:
795



Project
simulation



- **Project
Construction Start**



Secure Corridor

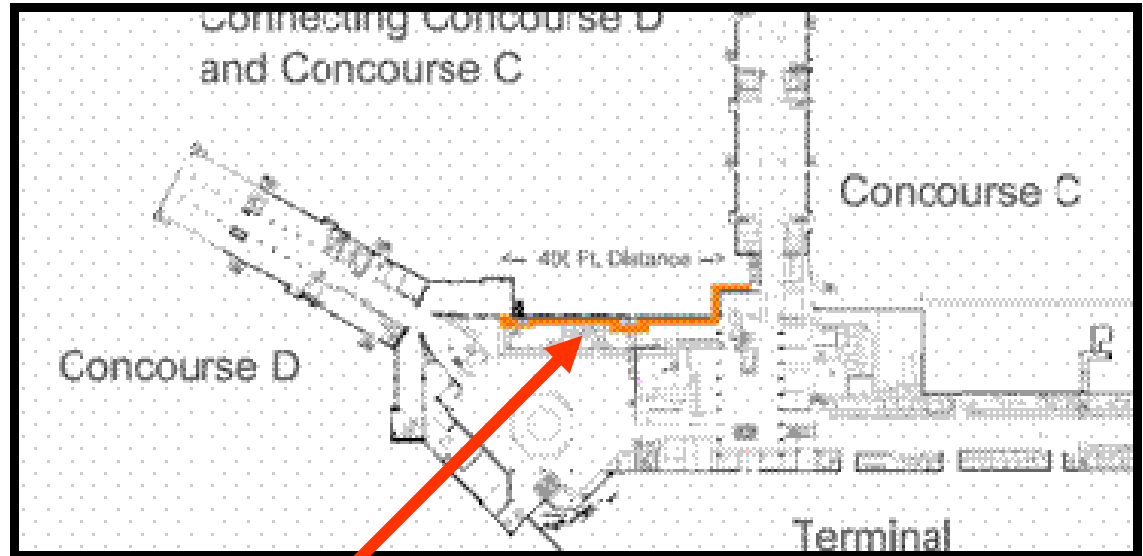
The development of a post-security corridor connecting Concourse C and Concourse D to increase efficiency and flexibility.

Budget

\$2 Million

Current Status

Construction scheduled for 2011.



Project location



- Project Construction Start



Airport Hotel

Development of a 250-room Airport Hotel along Airline Highway.

Budget

\$50 Million

100% third-party
developer/operator.

No Airport funds
will be used for
this project.

Current Status

This project is currently
being developed
and design is expected
to begin in 2013.

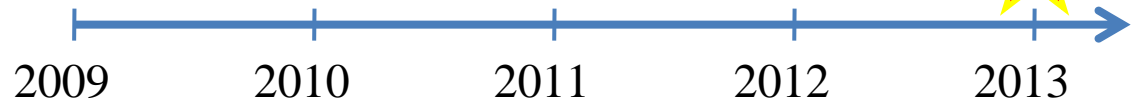
Construction related jobs:
1169



Project simulation



- Project
Design
Start



Privatization Q & A

What does this mean for MSY?

- Begin a bidding process to select a private operator for the airport.
- Discussions with the airlines that must ultimately approve the privatization – 65% agreement.
- Negotiate a new airline master lease agreement.
- Seek public input and draft a private operator concession agreement/lease document.

Who must approve the selection and lease with the private operator?

NOAB, NO City Council and the Mayor of New Orleans.

What must the private operator ensure?

- Reasonable access to the airport on reasonable terms.
- Operate the airport safely.
- Provide security.
- Continued maintenance and improvement.
- Mitigate noise and environmental impacts.

What prompted the board to pursue this effort?

Bring private capital for the development of the Airport.

We will only embark upon the final steps to privatization if it is determined to be economically feasible.



Thank you!



Open Communication is Critical to Armstrong International Airport

Patricia Malone

Interim Director of Aviation
patm@flymsy.com
504-464-2657
504-465-1350 (fax)

Louis Armstrong

New Orleans International Airport
P.O. Box 20007
New Orleans, LA 70141
www.flymsy.com

Maggie Woodruff

Deputy Director of Community & Governmental Affairs
maggiew@flymsy.com
504-464-3547
504-463-1049 (fax)

Don Maura

Acting Deputy Director of
Planning & Development
donm@flymsy.com
504-465-8823
504-465-2371 (fax)

www.flymsy.com –
**for the latest airport
and flight information**

